

U.P. ENGINEERS &
ARCHITECTS, INC.
NORWICH, VERMONT
NORWICH, VERMONT

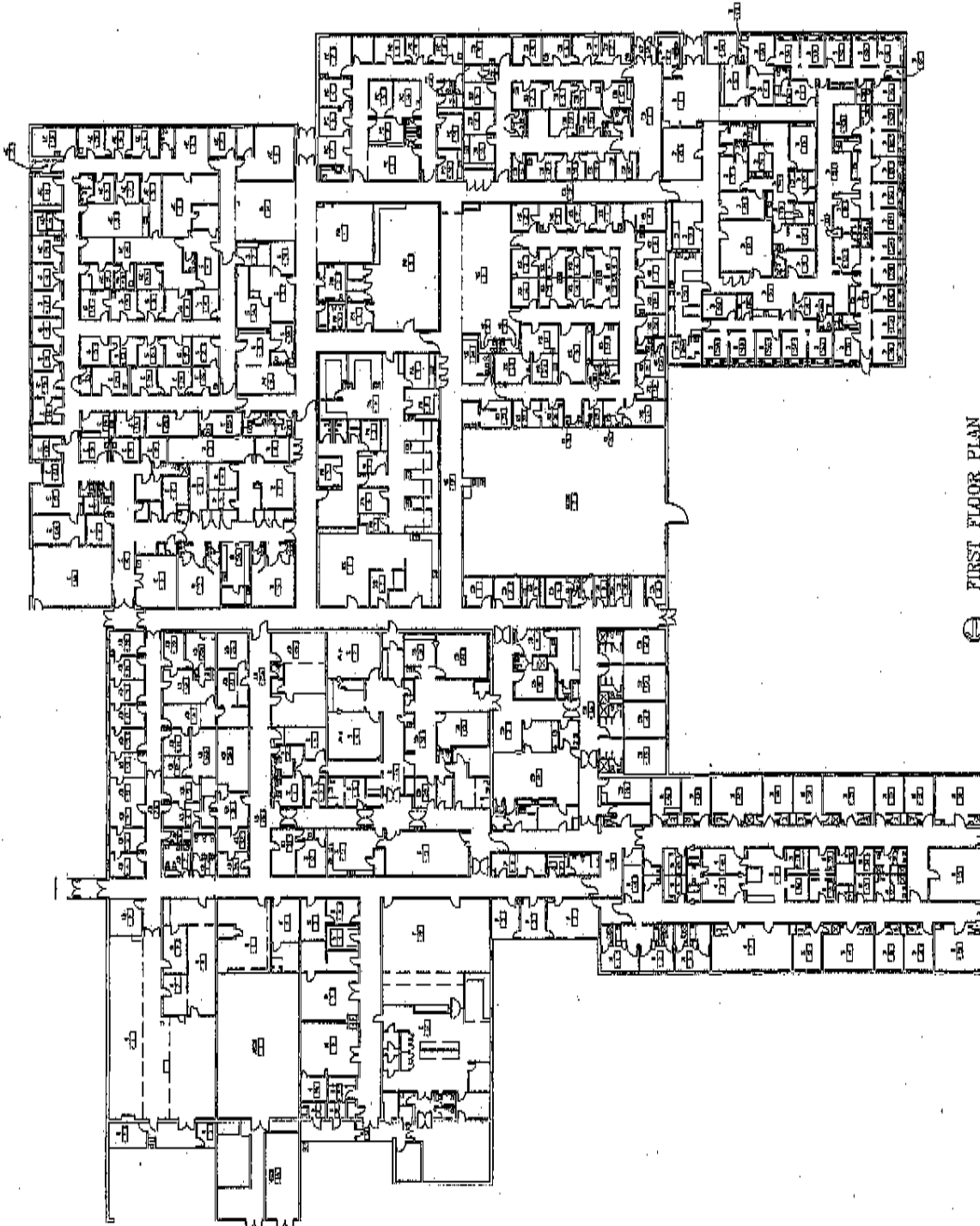


BUILDING DOCUMENTATION
K. I. SAWYER, MICHIGAN
BUILDING #850

DESIGNED: D.S./D.M.
DRAWN: 03-27-00
JOB NO: 1452-00413
CAD FILE: MS2-701-A1
SHEET NO.

KEY PLAN

A1



FIRST FLOOR PLAN



NORTH

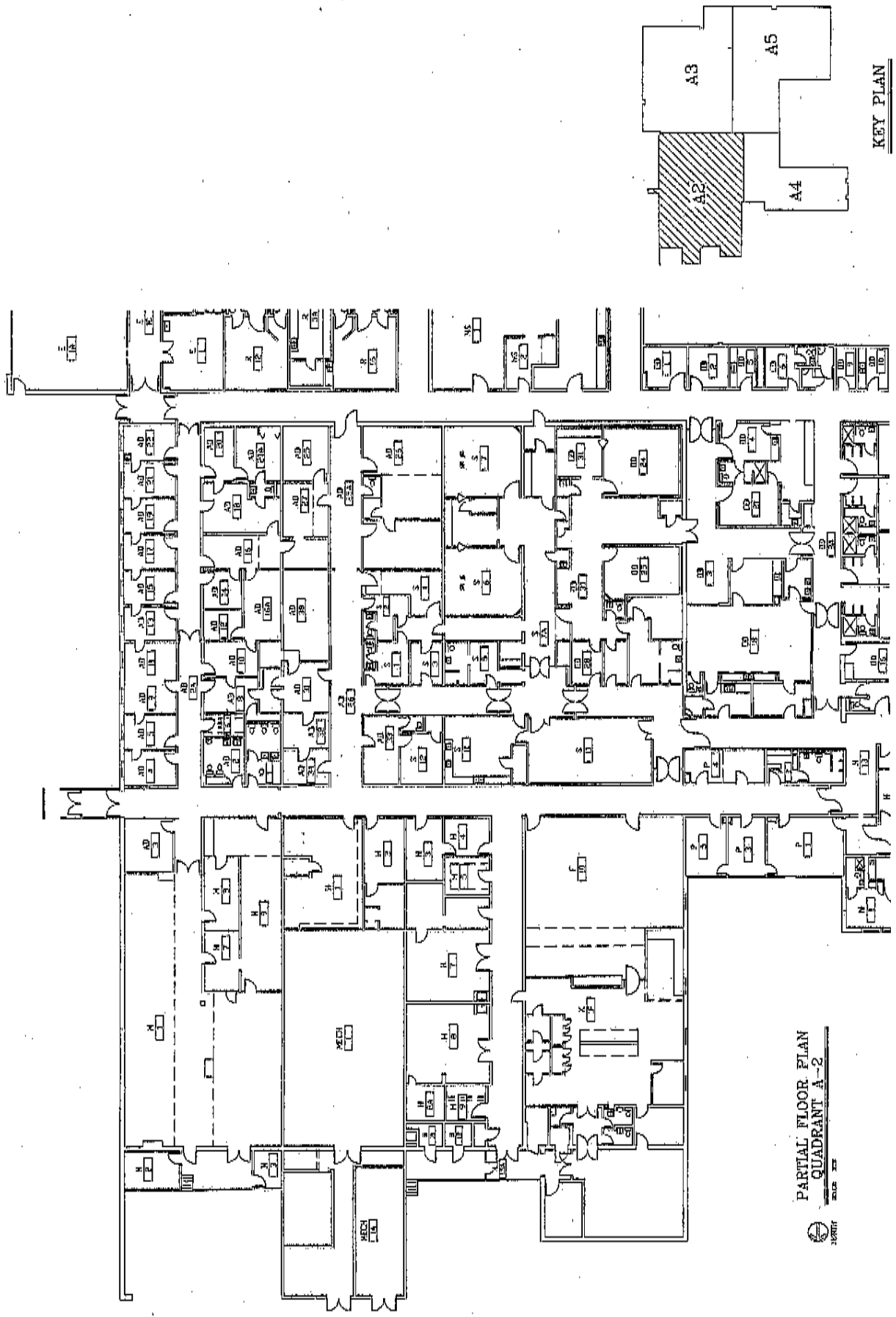
U.P. ENGINEERS & ARCHITECTS, INC.
HOLLAND • MARIETTA • KENTON • SAULT STE. MARIE



BUILDING DOCUMENTATION
BUILDING #850
K.T. SAWYER, MICHIGAN

DESIGNED: D.S./D.M.
DRAWN: Q3-27-00
DATE: M02-99433
JOB NO: M02-701-A2
CAD FILE: M02-701-A2

SHEET NO. A2



KEY PLAN

PARTIAL FLOOR PLAN
QUADRANT A-2



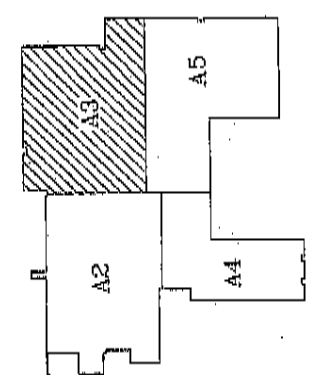
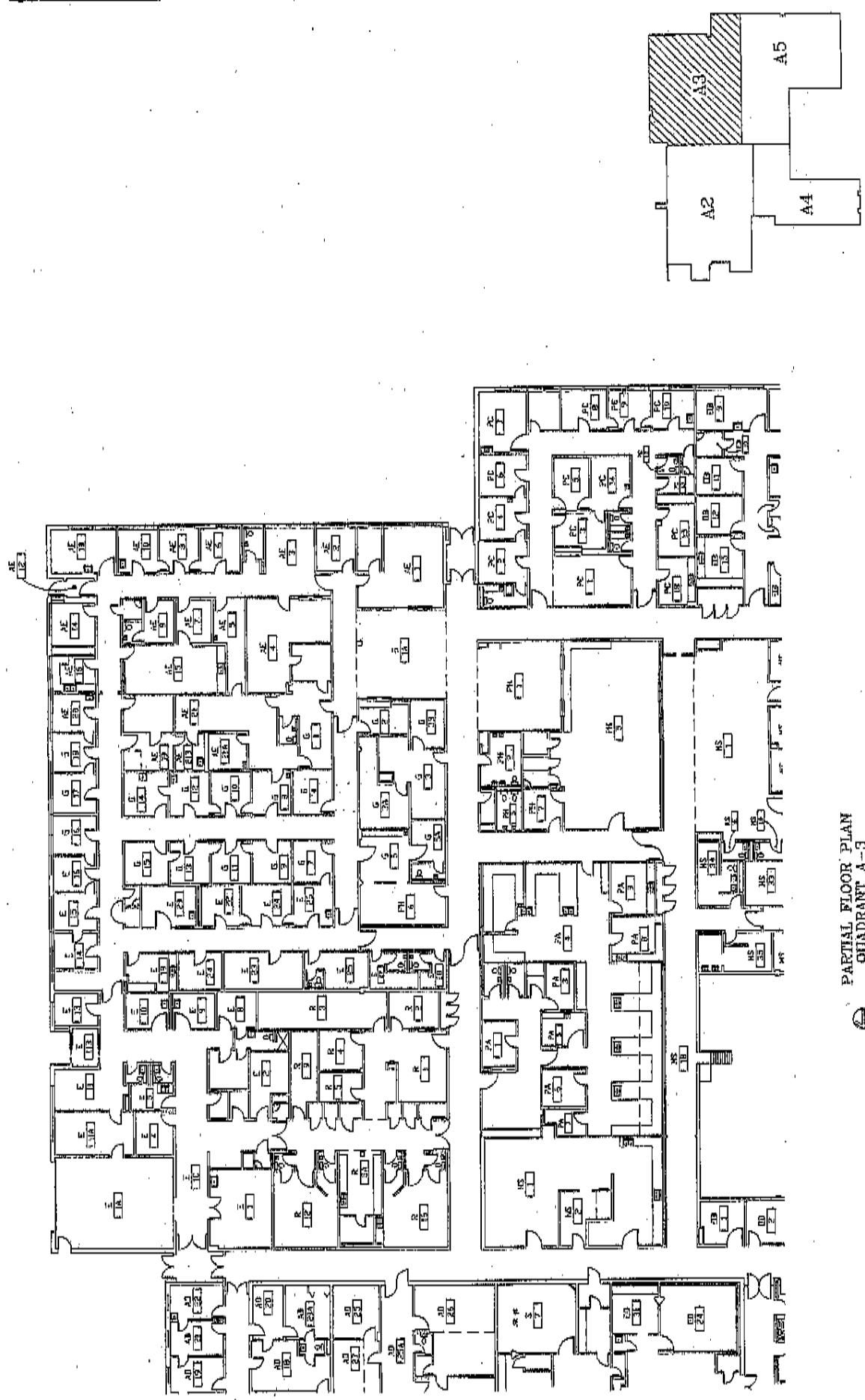
U.P. ENGINEER ARCHITECT



BUILDING DOCUMENTATION
BUILDING #850
K.J. SAWYER, MICHIGAN

DESIGNED: P.S./J.M.
DRAWN: J.S./J.M.
DATE: 03-27-00
SHEET NO. 03/05

A3



KEY PLAN

PARTIAL FLOOR PLAN
QUADRANT A-3



NORTH

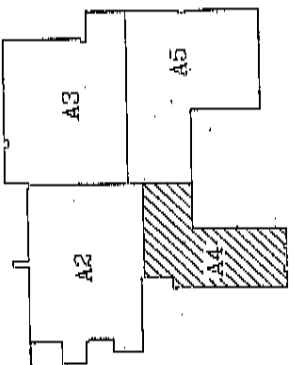
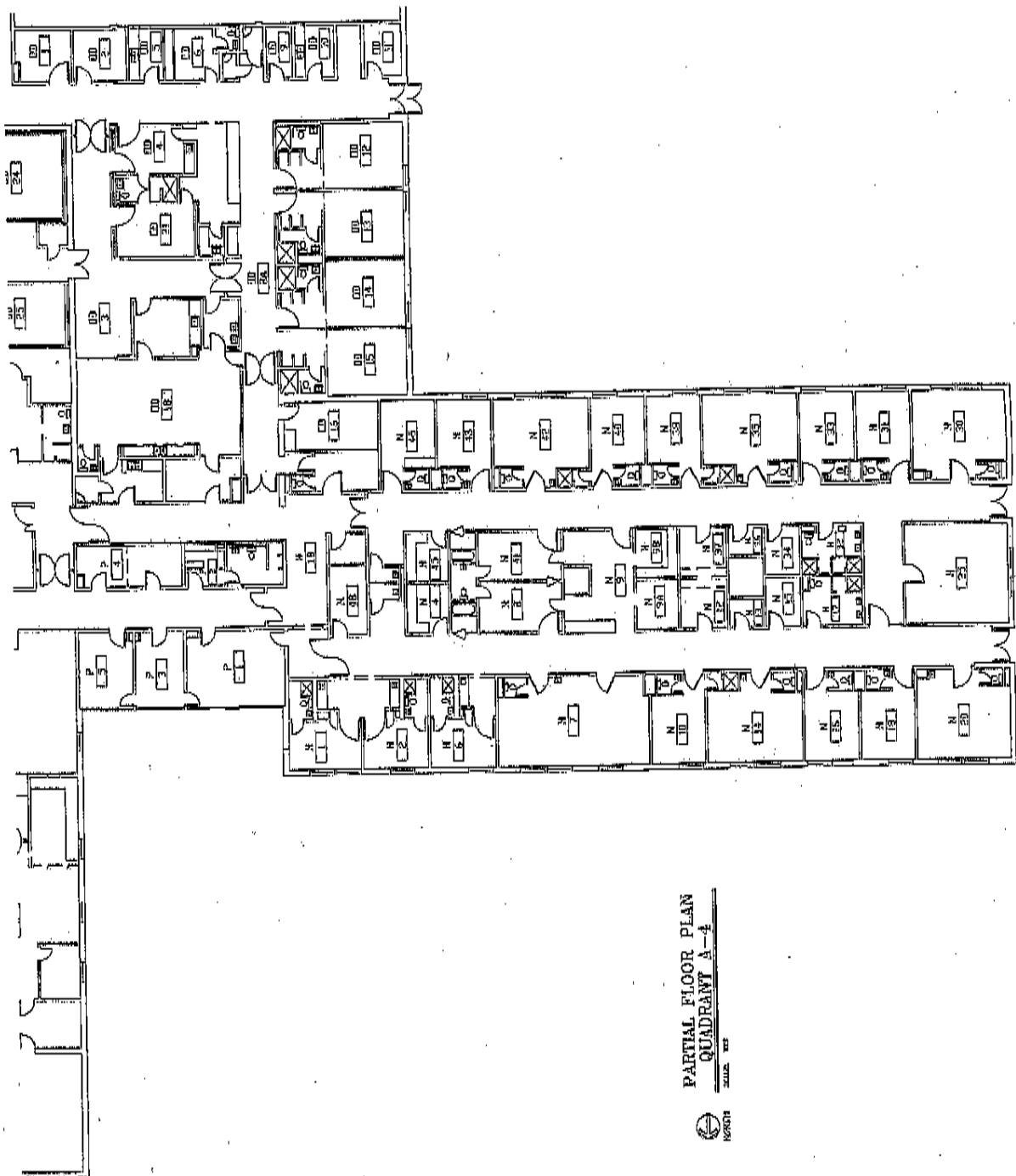
U.P. ENGINEERS & ARCHITECTS, INC.
NORWAY - SAULT STE. MARIE
MICHIGAN - ANN ARBOR



BUILDING DOCUMENTATION
BUILDING #850
R.I. SAWYER, MICHIGAN

SHEET NO.
DRAWN: D.S./D.M.
DATE: 03-27-00
JOB NO. W02-99433
C&B FILE W02-701-A4

A4



KEY PLAN

PARTIAL FLOOR PLAN
QUADRANT A-4



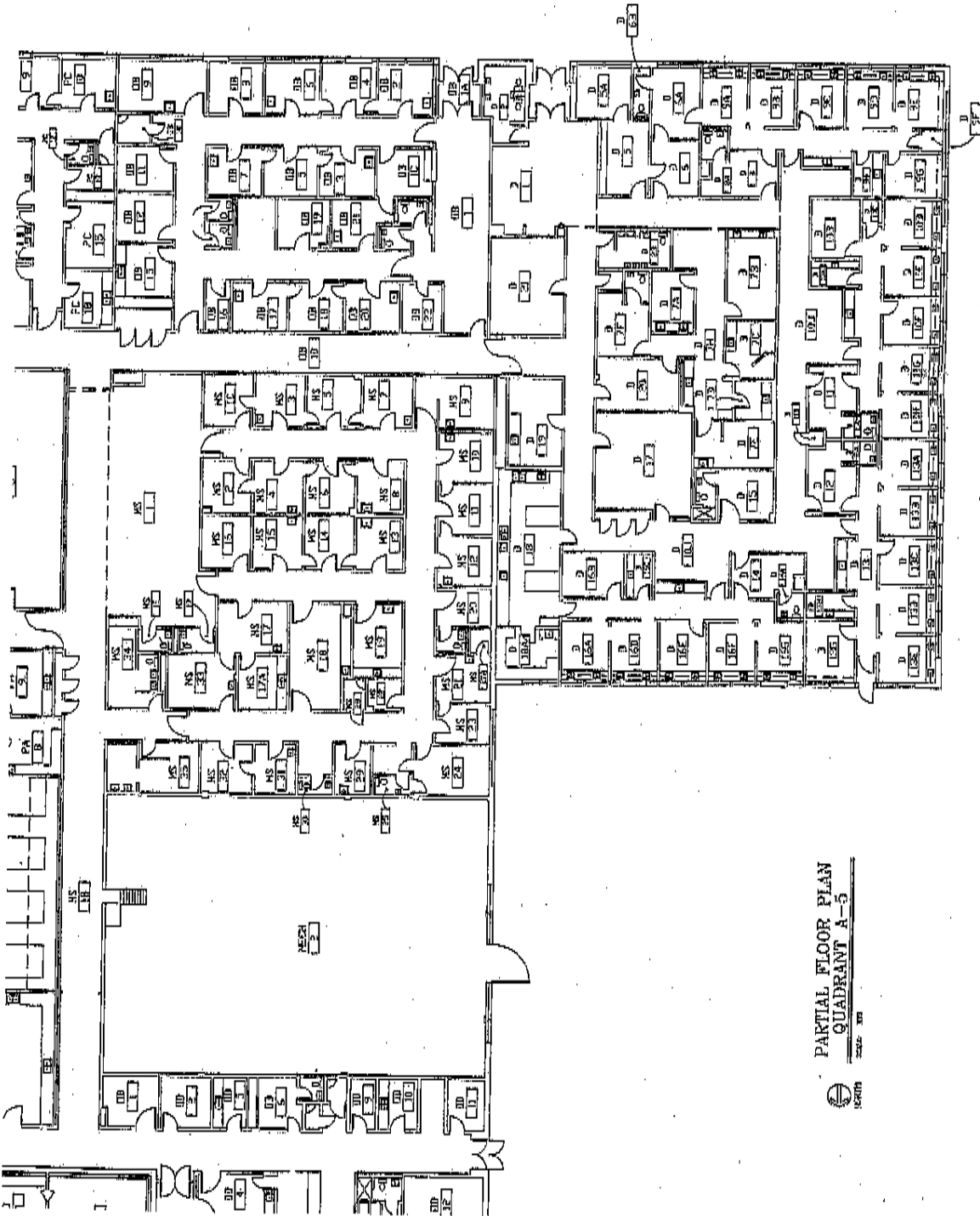
U.P. ENGINEERS & ARCHITECTS, INC.
INCORPORATED - MARCH 1978



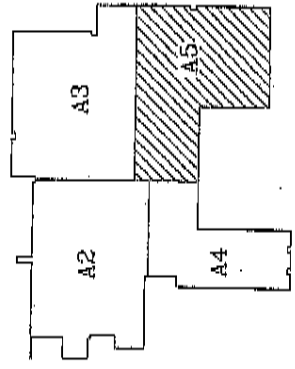
BUILDING DOCUMENTATION
BUILDING #850

DESIGNED: D.S./D.M.
DRAWN: D.S./D.M.
DATE: 03-27-00
JOB NO: MS3-00433
JOB REV: MS3-701-01

SHEET NO. A5



PARTIAL FLOOR PLAN
QUADRANT A-5



KEY PLAN